

UCLA BLUM CENTER
on Poverty and Health
in Latin America

Newsletter June 2015

Focus on Health in Latin America: Abortion and family planning laws

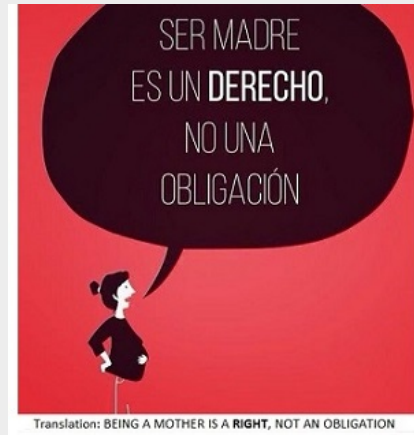


Image: MILES Chile

We are pleased to share a new feature of our newsletter: "Focus on Health in Latin America." For each "Focus" article, we'll take a closer look at important and trending issues throughout the region that are impacting health and well-being for Latin American populations.

This month's Focus article was written by Ernesto Valles, UCLA Blum Center Assistant, and takes a closer look at challenges surrounding reproductive health laws throughout the region. [Visit our website](#) to learn more.

10th Summer Institute on Migration and Global Health



UC GLOBAL
HEALTH
INSTITUTE

Center of Expertise on
Migration and Health

Greetings (Contact First Name),

Welcome to the June Newsletter of the UCLA Blum Center. We hope that this email finds you well!

In this issue

[Announcing the 2015 UCLA Blum Graduate Summer Scholars](#)

[Research updates: Operationalizing Social Cohesion in Latin America](#)

[In the news: UCLA Blum Center report "Creating conditions to support healthy people"](#)

[Congratulations to our graduating UCLA Blum Center students!](#)

Announcing the 2015 UCLA Blum Graduate Summer Scholars

Each year, the UCLA Blum Summer Scholars program provides a unique opportunity for students with a passion for working on health and social justice issues to do field research in Latin American countries and collaborate with academic institutions, governments, and NGOs. Our Center provides each student with a fellowship, mentoring, and logistics support for their two month placement with communities throughout Latin America. With summer just around the corner, we are delighted to present our 2015 Summer Scholars:

Edgar Corona, MD '19

Site: Institute of Mexican Social Security,
Epidemiology and Health Services Unit,
Cuernavaca, México



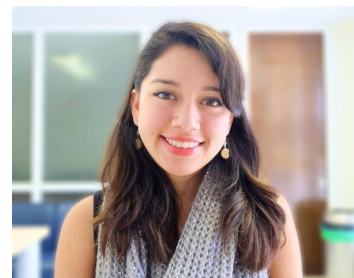
Cuernavaca, Mexico

Project: Evaluation of performance and cost-effectiveness of screening and triage strategies for high-risk Human papillomavirus (hrHPV) positive women in México

Jose Cuchilla, PhD Sociology '20

Site: Salud Mesoamérica 2015 Initiative, Panama City, Panamá

Project: Office of Monitoring and Evaluation



Adriana Quiquivix, MURP '16

Site: Centro de Investigación y Docencia Económicas (CIDE), Mexico City, México

Project: Analysis of urban form on mobility patterns in cities throughout

México

Mayra Rascón, MPH, PhD '19 Health Policy and Management

Site: National Institute of Public Health, Cuernavaca, México

Project: Evaluation of food labeling policies designed to improve nutrition and prevent obesity



Rafaela Rodriguez, MSW '16

Site: FNE International and Universidad Nacional Autónoma de Nicaragua-León, León, Nicaragua

Project: Examination of current and past interventions in Nicaragua for reducing incidents of teen pregnancy

June 22-25th in Oakland

Through lectures, workshops and field trips, experts will present on the relationship between migration and global health, offering public health, public policy, and social science perspectives. Participants will acquire new skills; and have the opportunity to network with experts in the field.

For more information and to register, [here](#).

Andean Health 1500: Raising Funds for, and Shining the Light on, Rural Health Care in the Americas



From June 13 - July 4, up to 30 cyclists will take to the road to raise funds to complete the building of Hesburgh Hospital, serving rural, impoverished communities in Ecuador.

Sponsored by the Andean Health & Development organization, this team of cyclists expects to raise \$500,000 as they pedal their way from Seattle, WA to Sioux Falls, SD through five states and climbing more than 50,000 ft. Along the route, they will not only raise funds but they will award four rural community health centers with small grants to recognize their achievements in delivery health care in a rural community.

Among the cyclists will be the UCLA Blum Center's very own consulting group, Dubois Betourné & Associates (better known as Mark and Anne or Team DBA). We wish them luck and urge our friends to [join the campaign](#) by considering a donation to

this very worthy cause. **To help Team DBA reach its fundraising goal, when making a donation and asked to designate the donation, select Team DBA for AH1500.**

Stay in Touch with the UCLA Blum Center



Like us on **Facebook** 

Follow us on **twitter**



Subscribe to receive our monthly newsletter and email updates

Visit Our Website

blumcenter.ucla.edu

Evelyn Sanchez, MSW '16

Site: World Vision, Guatemala City, Guatemala

Project: Evaluation of Guatemala maternal and child health programs of World Vision International



To read more about our 2015 Summer Scholars and their projects, please visit our [website](#).

Research Updates: Operationalizing Social Cohesion in Latin America



Director Michael Rodriguez and social cohesion research colleagues in Mexico

The UCLA Blum Center's [project on social cohesion](#) is moving into its next phase of data collection as the project and Center's Director, Michael Rodriguez, starts to conduct site visits in Latin America to speak with various stakeholders

responsible for operationalizing social cohesion policies and programs. To read more updates on our project, which is funded by the Robert Wood Johnson Foundation, visit our [website](#).

In the news: UCLA Blum Center co-authored report "Creating conditions to support healthy people"



Creating conditions to support healthy people:
State policies that affect the health of undocumented immigrants and their families

In April the UCLA Blum Center, along with the UCLA Center for Health Policy Research and the UC Global Health Initiative, released the report *Creating conditions to support health people: State policies that affect the health of undocumented immigrants and their families*. To mark the release of the report, co-author

and their families. To mark the release of the report, 65 authors and Center Director Michael Rodriguez participated in panel discussions hosted by the UCLA Center for Health Policy Research and as part of UC Global Health Day. Additionally, the report garnered significant national attention through coverage by over a dozen major media outlets. Press coverage ranged from large international and national outlets (Telemundo, [International Business Times](#), [La Opinion](#), [Fusion](#), [Latin Post](#)) to local and state coverage ([The Columbus Dispatch](#), [Sun-Sentinel](#), [New York Daily News](#)).

Congratulations to our graduating UCLA Blum Center students!

Joining the many other proud graduates of UCLA this June will be our very own students interns and work-study assistants. UCLA Blum Center Intern Marissa Hernandez and UCLA Blum Center Assistants Griselda Ortiz and Ernesto Valles have made countless contributions to our Center's growth and efforts, and we will miss their spirit, energy and enthusiasm tremendously. We are so proud of Marissa, Griselda and Ernesto for their tremendous accomplishments, and look forward to staying in touch with them and watching them embark on their post-UCLA careers. Congratulations to our outstanding students!



Griselda Ortiz



Marissa Hernandez



Ernesto Valles

Por salud y prosperidad,

Michael A. Rodriguez, MD, MPH
Director, UCLA Blum Center on Poverty and Health in Latin America
Professor, UCLA Department of Family Medicine