

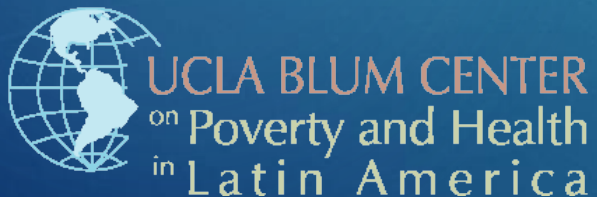
Operationalization of Social Cohesion

INTERVENTIONS IN LATIN AMERICA AND EUROPE

CUGH Annual Conference

April 10, 2016

Michael A. Rodriguez, MD, MPH



Why study social cohesion?

Aim 1

To explore how and why social cohesion policies and interventions in Latin America have evolved.

Research Question: What cultural, social and political factors contribute to prioritization of social cohesion strategies?

Aim 2

To identify social cohesion interventions that have taken place or are currently taking place in Latin America

Research Question: What components (policies, etc.) and processes (actors, etc.) result in successful social cohesion interventions?

Aim 3

To provide recommendations on operationalizing health-related programs built on social cohesion within the cultural and socio-economic context of the United States

Research Methodology



Literature Review

What social, cultural, political and economic factors contribute to implementation of social cohesion strategies?



Key Informant Interviews and Case Studies

Five sites; 17 Interviews
62 nations represented
Qualitative data analyses



Assessment of Supplemental Materials

Analysis of collection of materials acquired from case study sites: guidelines, manuals, policy examples and more

Domains Explored: Overview of Results

Definitions

Wide range of unique definitions; linked to government obligation to its citizens

Implementation

Unique to the issues and dimensions addressed

Context

Need for centralized governments; equal distribution of resources; transparency

Evaluation

Limited efforts measured impact of factors that affect social cohesion (e.g., nutrition, social security, health, education, etc.)

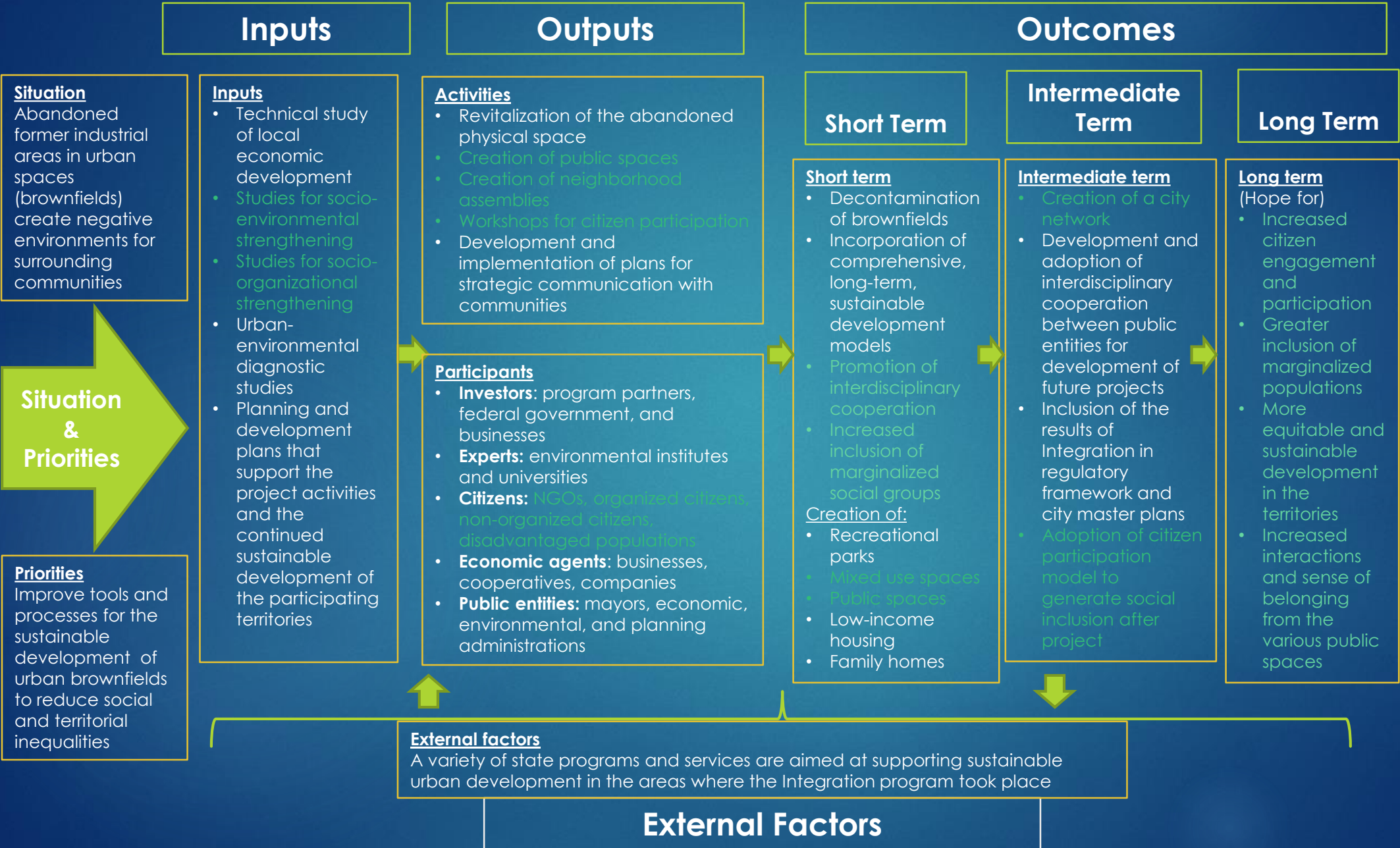
Dimensions

Social inclusion; equality; legitimacy; human rights; civic participation; social mobility

Sustainability

Attributed to leadership and capability of project sites

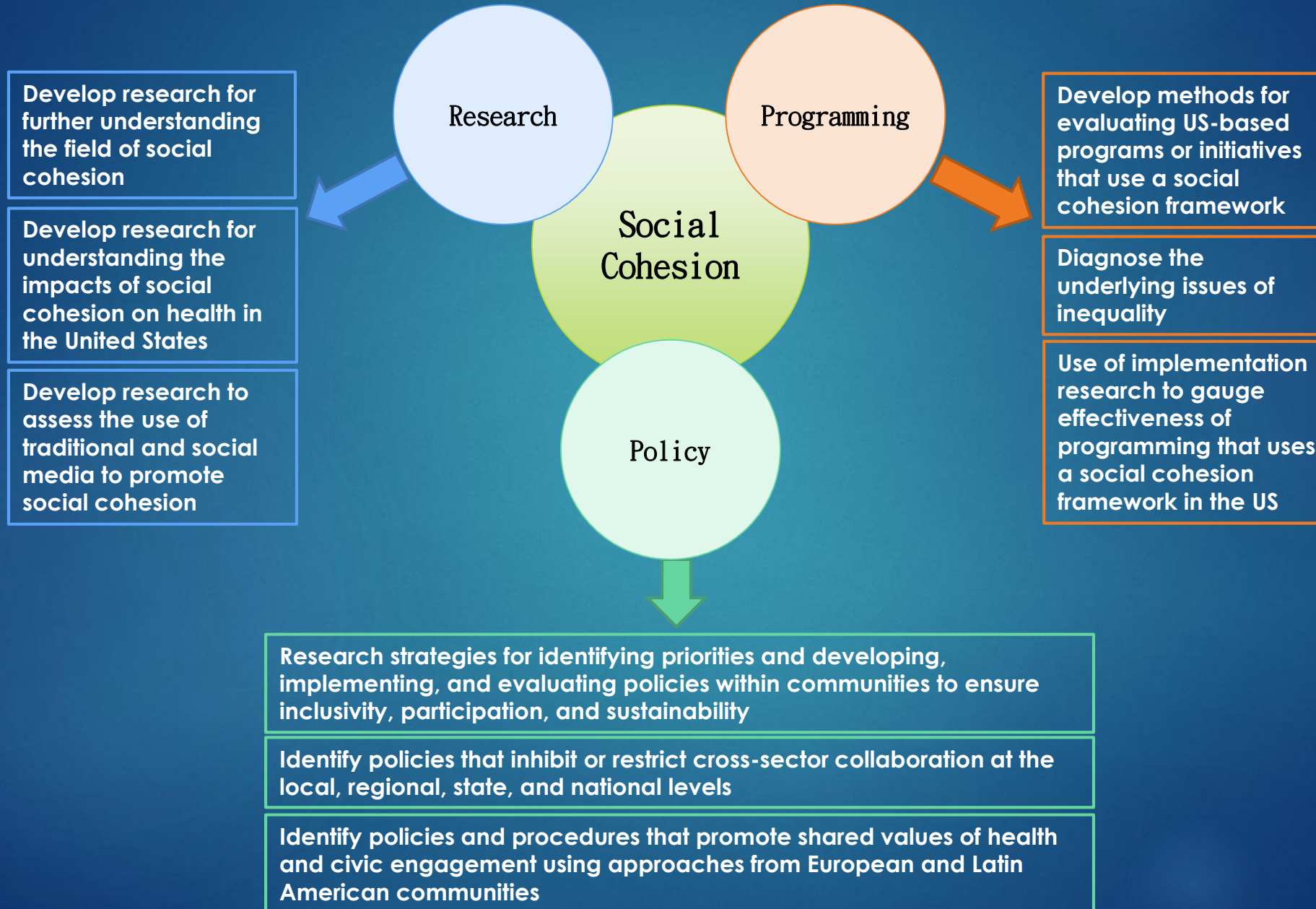
Operationalization of Social Cohesion Logic Model: Integration, URB-AL III Program



Gaps in Social Cohesion Knowledge and Implementation

- Consistent definition of social cohesion
- Formal, long-term evaluation of programs
- Methods for measuring the achievement of social cohesion
- Methods for identifying and developing policies that foster social cohesion
- Improved understanding of the utility of social cohesion for improving health outcomes in the United States

Recommendations

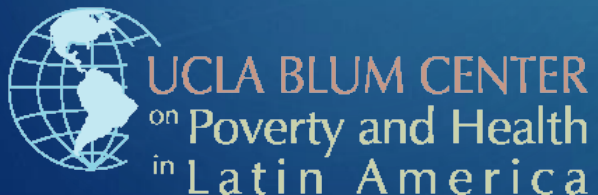


Thank you for your time

ANY QUESTIONS??

Email inquiries to:

Mrodriguez@mednet.ucla.edu



Funded by the Robert Wood Johnson Foundation, this research effort and its results will inform the RWJF Culture of Health Initiative.

